



# IMC SCRAPERS

WWW.IMCSCRAPERS.COM

**8 yds<sup>3</sup> (6.1 m<sup>3</sup>)**

**Pivot Dump CFB (fixed blade) 8CFB7**



**7 ft (2.34 m) wide cut for LASER FINISHING**

### “Laser Controlled”

scraper designed for general land forming, precision leveling farms or building sites & soil transport for Ag Tractors from 100 to 150 HP. CFB (fixed blade) scrapers can be equipped with optional tandem kits for multiple unit hook up on single tractor.

### “Fixed Blade”

system offers you earth moving productivity combined with Laser or GPS finishing capacity in one unit. The cutting blade is mounted to the scraper frame fixed in a single position & hinged to the bucket floor, therefore, pivoting the bucket does not affect cutting or spreading height while in operation.

### “Reinforced Frame”

designed to comply with higher horse powered Ag tractors and heavier load capacities. Hydraulic line covers protect all lines with easy service access & external threaded cylinders prevent leaking. Reversible carbon alloy blade & tungsten treated side wear plates last longer than traditional cutting edges.

“Scrapers that make the Earth Move”

# IMC SCRAPERS

WWW.IMCSCRAPERS.COM

### Specifications

#### -Capacities

8 yds<sup>3</sup> (6.1 m<sup>3</sup>) heaped  
5.7 yds<sup>3</sup> (4.3 m<sup>3</sup>) struck

#### -Tires

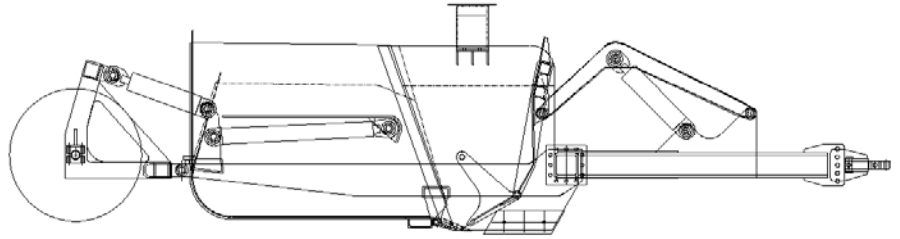
(4) 12.5 x 16

#### -Weight

6,000 lbs. (2,721 kg)

#### -Cylinders

Type: External Thread  
Frame: (2) 4" x 8" stroke  
Gate: (1) 4" x 10" stroke  
Bucket: (2) 3.5" x 27" stroke



#### -operating/transport dimensions

W 102" (2.5 m) , L 220" (5.6 m), H 76" (1.8 m)

#### -shipping dimensions

W 102" (2.5 m) , L 220" (5.6 m), H 76" (1.8 m)

### Features

- Increased Blade Visibility
- Increased 11" Ground Clearance
- Adjustable Heavy Duty Yoke Hitch
- Wear Resistant Side Wear Bits
- Height Adjustable Axle Mounts
- Dual Hub Mounted Wheels
- High Carbon Reversible Blade
- Laser Bracket (standard)
- Tandem Quick Hitch & Hydraulics (Optional)
- Easy Service Access to Hydraulics

**"Bowl Pivots while blade remains in fixed position"**



### Options

- Tandem Quick Hitch & Hydraulics
- Scraper Drawbar
- 3 piece blade w/aggressive center
- 1 piece blade w/ center frost bit
- Brake & Light Kits



### Tractor Requirements

#### -Hydraulics

Required two double acting circuits optimum 25 GPM (100 l/min) at 2500 psi (175 bar)

#### -Tractor HP range

Single 100-150 HP  
Double 150-200 HP

