



# IMC SCRAPERS

WWW.IMCSCRAPERS.COM

**10.4 yds<sup>3</sup> (8 m<sup>3</sup>)**

**Pivot Dump CFB (fixed blade) 6mCFB7**



**7 ft (2.34 m) wide cut for LASER FINISHING**

### “Laser Controlled”

scraper designed for general land forming, precision leveling farms or building sites & soil transport for Ag Tractors from 100 to 150 HP. CFB (fixed blade) scrapers can be equipped with optional tandem kits for multiple unit hook up on single tractor.

### “Fixed Blade”

system offers you earth moving productivity combined with Laser or GPS finishing capacity in one unit. The cutting blade is mounted to the scraper frame fixed in a single position & hinged to the bucket floor, therefore, pivoting the bucket does not affect cutting or spreading height while in operation.

### “Reinforced Frame”

designed to comply with higher horse powered Ag tractors and heavier load capacities. Hydraulic line covers protect all lines with easy service access & external threaded cylinders prevent leaking. Reversible carbon alloy blade & tungsten treated side wear plates last longer than traditional cutting edges.

“Scrapers that make the Earth Move”

# IMC SCRAPERS

WWW.IMCSCRAPERS.COM

### Specifications

#### -Capacities

10.4 yds<sup>3</sup> (8 m<sup>3</sup>) heaped

6.7 yds<sup>3</sup> (5.1 m<sup>3</sup>) struck

#### -Tires

(4) 12.5 x 16

#### -Weight

6,000 lbs. (2,721 kg)

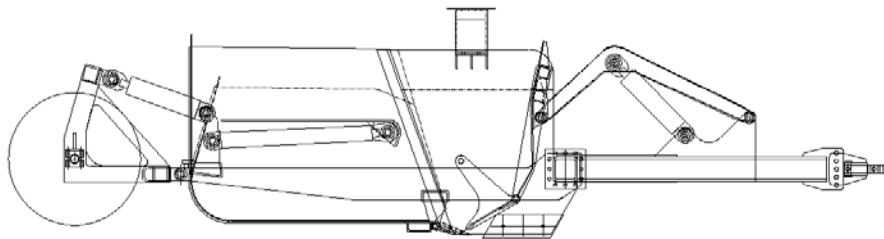
#### -Cylinders

Type: External Thread

Frame: (2) 4" x 8" stroke

Gate: (1) 4" x 10" stroke

Bucket: (2) 3.5" x 27" stroke



#### -operating/transport dimensions

W 102" (2.5 m) , L 220" (5.6 m), H 76" (1.8 m)

#### -shipping dimensions

W 102" (2.5 m) , L 220" (5.6 m), H 76" (1.8 m)

### Features

Increased Blade Visibility

Increased 11" Ground Clearance

Adjustable Heavy Duty Yoke Hitch

Wear Resistant Side Wear Bits

Height Adjustable Axle Mounts

Dual Hub Mounted Wheels

High Carbon Reversible Blade

Laser Bracket (standard)

Tandem Quick Hitch & Hydraulics (Optional)

Easy Service Access to Hydraulics

**"Bowl Pivots while blade remains in fixed position"**



### Options

Tandem Quick Hitch & Hydraulics

Scraper Drawbar

3 piece blade w/aggressive center

1 piece blade w/ center frost bit

Brake & Light Kits



### Tractor Requirements

#### -Hydraulics

Required two double acting circuits optimum 25 GPM (100 l/min) at 2500 psi (175 bar)

#### -Tractor HP range

Single 100-150 HP

Double 150-200 HP

