



IMC SCRAPERS

WWW.IMCSCRAPERS.COM

6 yds³ (4.6 m³)

Pivot Dump CFB (fixed blade) 6CFB7



7 ft (2.34 m) wide cut for LASER FINISHING

“Laser Controlled”

scraper designed for general land forming, precision leveling farms or building sites & soil transport for Ag Tractors from 80 to 130 HP. CFB (fixed blade) scrapers can be equipped with optional tandem kits for multiple unit hook up on single tractor.

“Fixed Blade”

system offers you earth moving productivity combined with Laser or GPS finishing capacity in one unit. The cutting blade is mounted to the scraper frame fixed in a single position & hinged to the bucket floor, therefore, pivoting the bucket does not affect cutting or spreading height while in operation.

“Reinforced Frame”

designed to comply with higher horse powered Ag tractors and heavier load capacities. Hydraulic line covers protect all lines with easy service access & external threaded cylinders prevent leaking. Reversible carbon alloy blade & tungsten treated side wear plates last longer than traditional cutting edges.

“Scrapers that make the Earth Move”

IMC SCRAPERS

WWW.IMCSCRAPERS.COM

Specifications

-Capacities

6 yds³ (4.6 m³) heaped
4.7 yds³ (3.6 m³) struck

-Tires

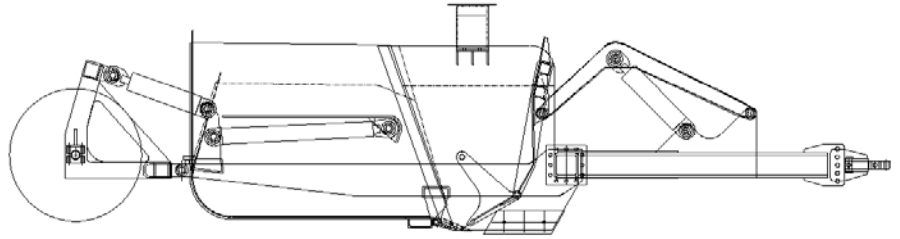
(4) 12.5 x 16

-Weight

5,500 lbs. (2,495 kg)

-Cylinders

Type: External Thread
Frame: (2) 4" x 8" stroke
Gate: (1) 4" x 10" stroke
Bucket: (2) 3.5" x 27" stroke



-operating/transport dimensions

W 102" (2.5 m) , L 220" (5.6 m), H 67" (1.7 m)

-shipping dimensions

W 102" (2.5 m) , L 220" (5.6 m), H 67" (1.7 m)

Features

- Increased Blade Visibility
- Increased 11" Ground Clearance
- Adjustable Heavy Duty Yoke Hitch
- Wear Resistant Side Wear Bits
- Height Adjustable Axle Mounts
- Dual Hub Mounted Wheels
- High Carbon Reversible Blade
- Laser Bracket (standard)
- Tandem Quick Hitch & Hydraulics (Optional)
- Easy Service Access to Hydraulics

"Bowl Pivots while blade remains in fixed position"



Options

- Tandem Quick Hitch & Hydraulics
- Scraper Drawbar
- 3 piece blade w/aggressive center
- 1 piece blade w/ center frost bit
- Brake & Light Kits



Tractor Requirements

-Hydraulics

Required two double acting circuits optimum 15 GPM (60 l/min) at 2500 psi (175 bar)

-Tractor HP range

Single 80-130 HP
Double 100-150 HP

